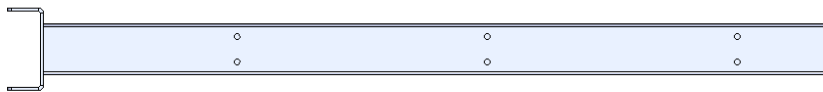
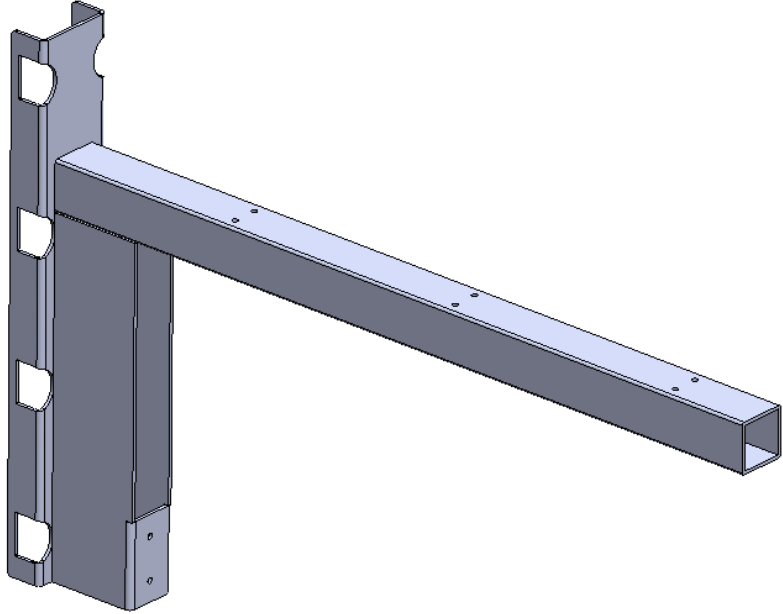


# INSTALLATION INSTRUCTIONS

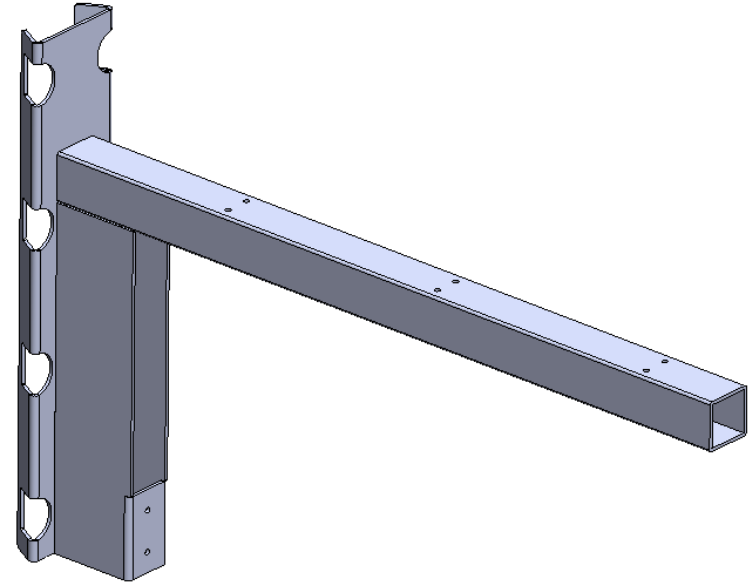
- IRD3425-02



# Mechanical Installation



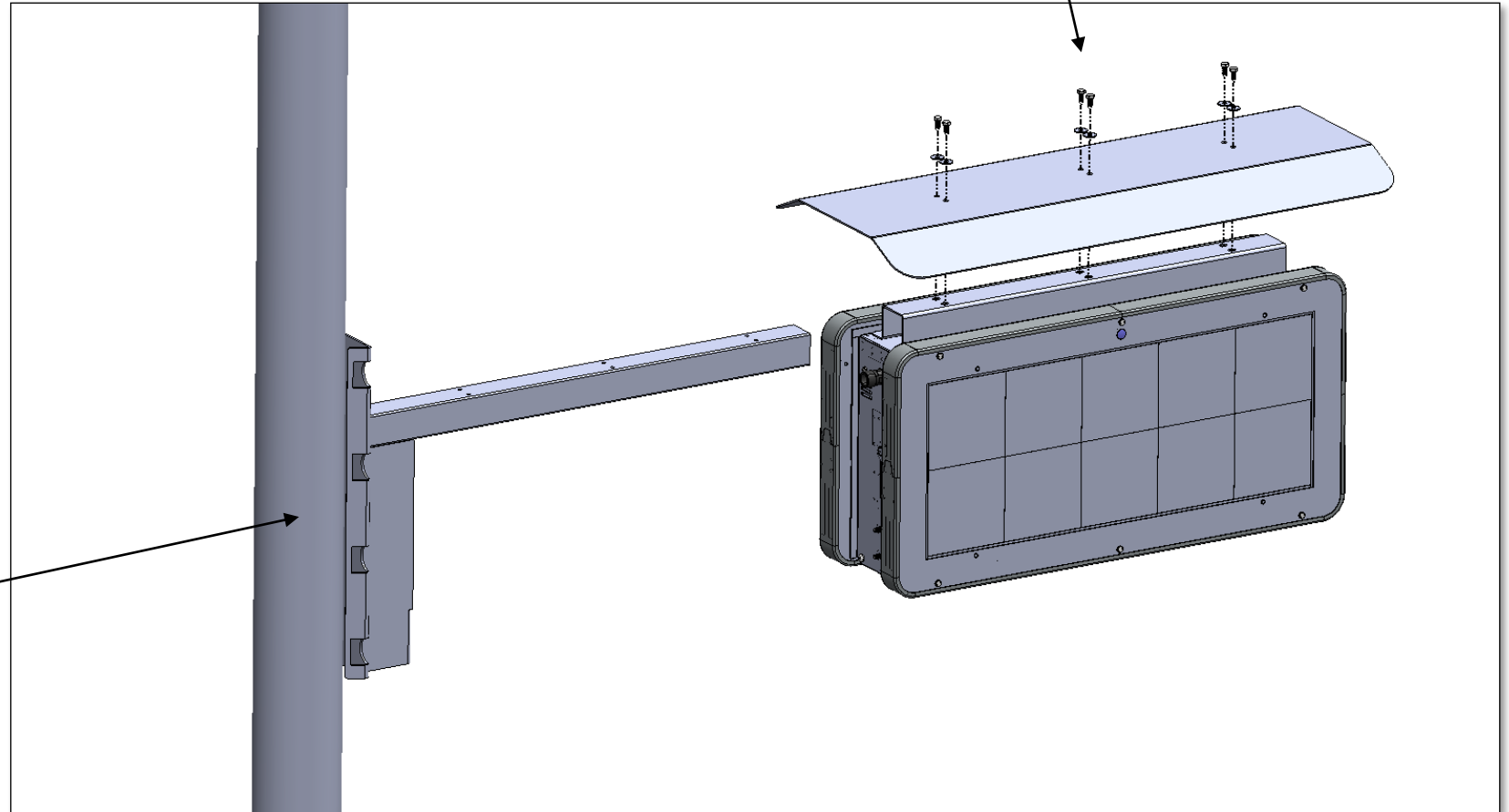
**Square** Pole Polearm Mount,  
used for square pole .



**Round** Pole Polearm Mount,  
used for round pole.

# Mechanical Installation

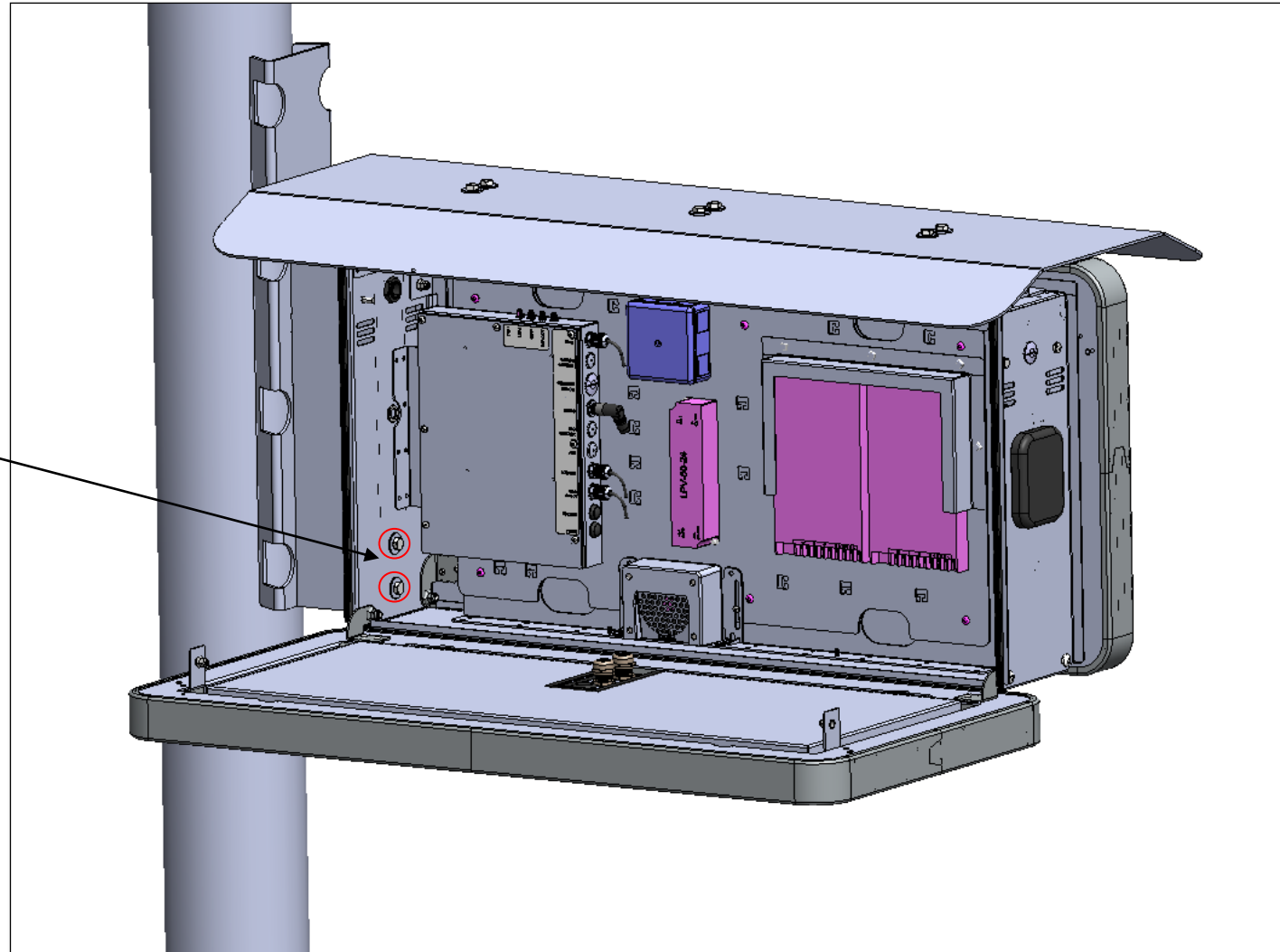
Use four Hose Clamps to attach the Polearm Mounting Bracket to the pole.



6x Hexagonal Screws M6SH M8x16 A2  
6x Washer Flat 8,4x24x2 A4

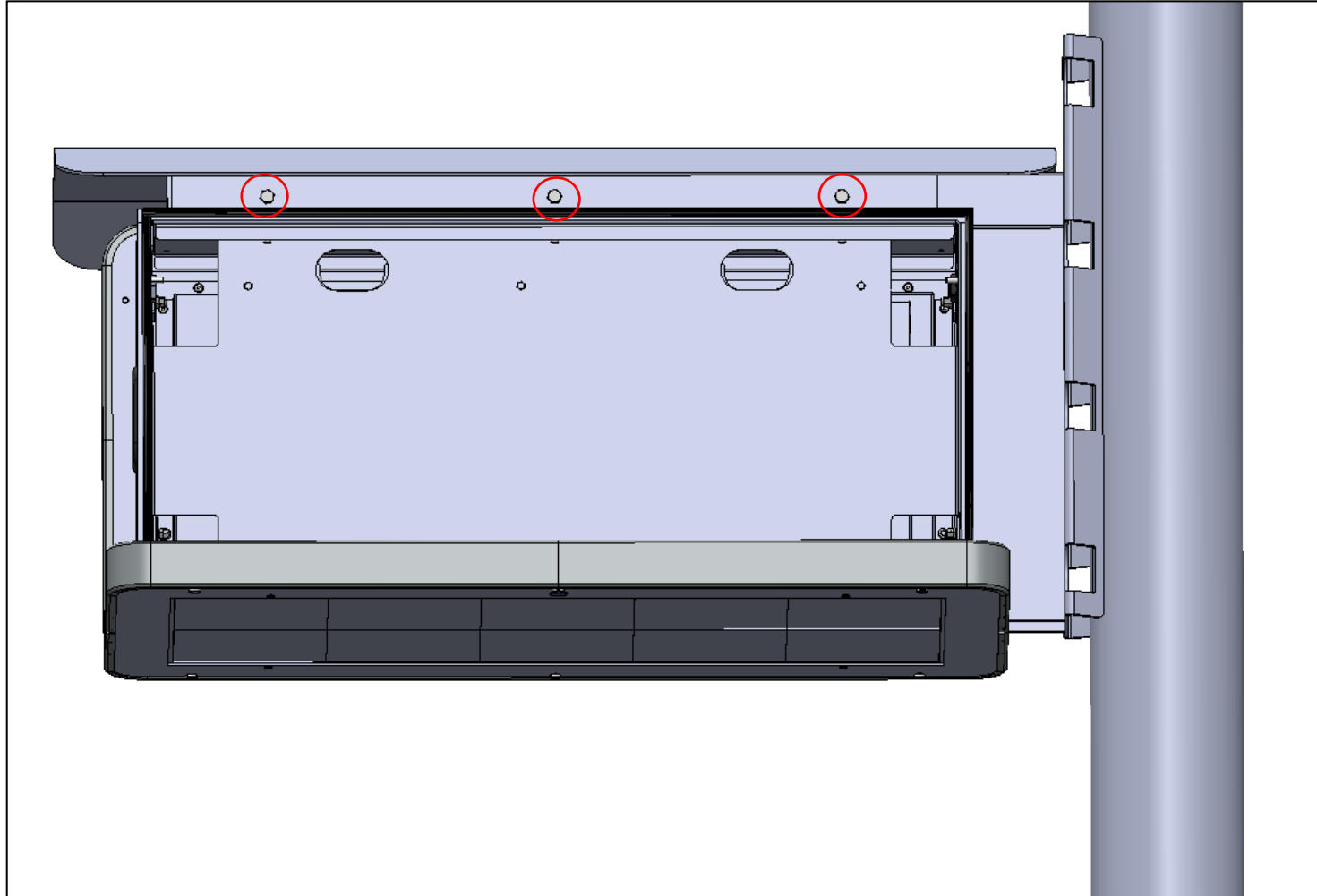
# Mechanical Installation

2x Hexagonal Screws M6SH M8x16 A2  
2x Washer Flat 8,4x24x2 A4



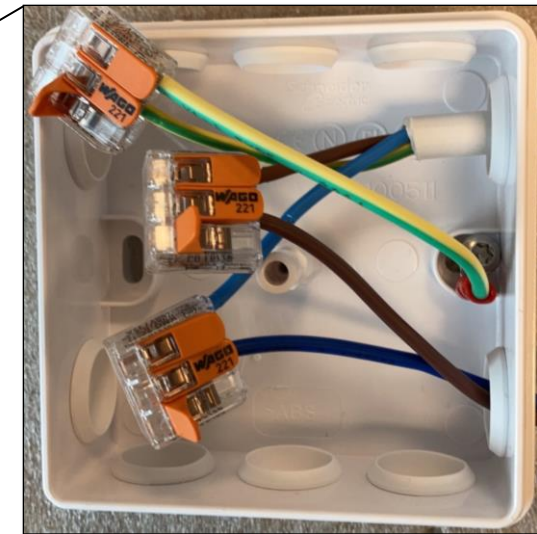
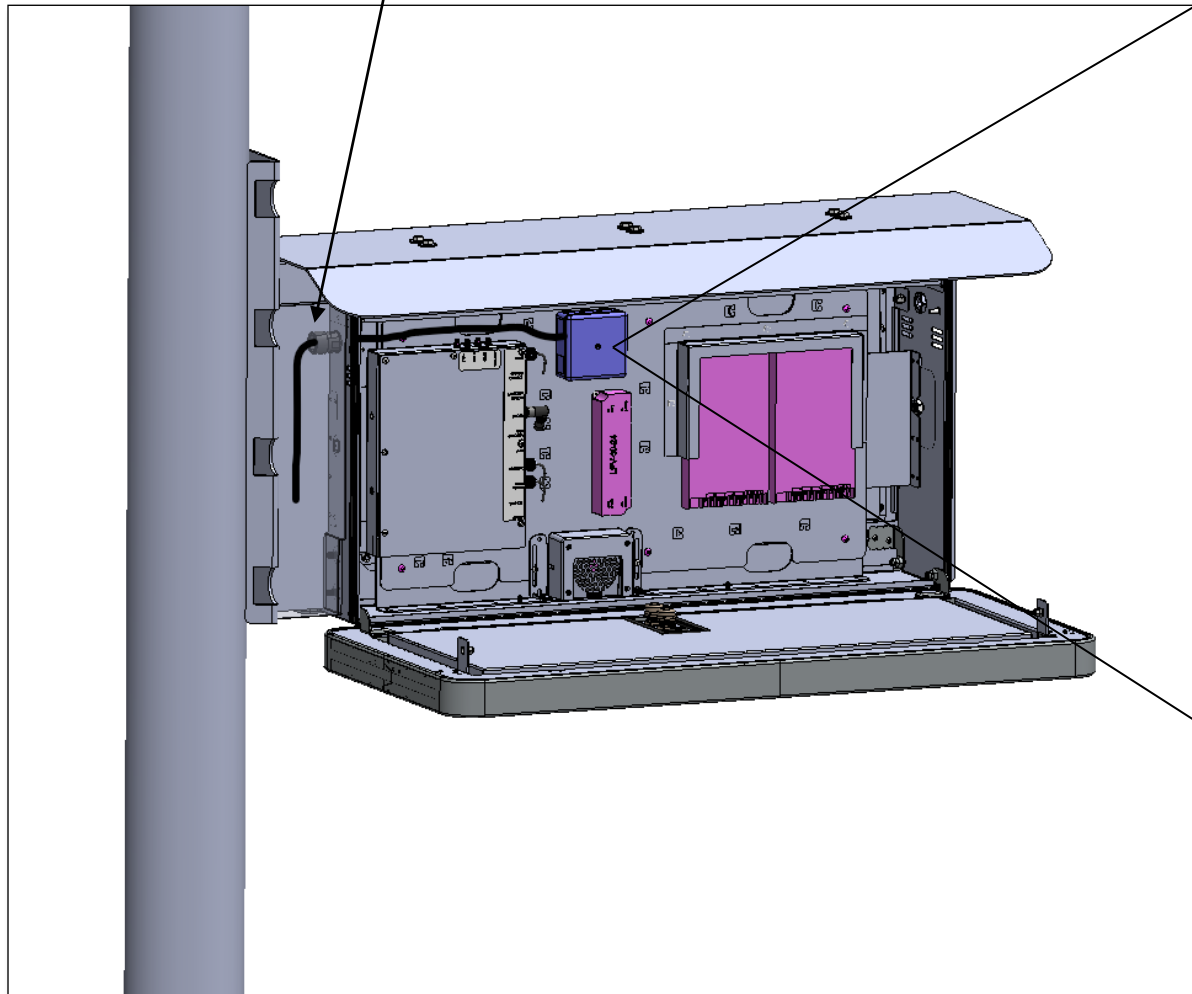
# Mechanical Installation

3x Hexagonal Screws M6SH M8x16 A2



# Electrical Installation

Power Cable (minimum 3x1.5mm<sup>2</sup>) pulled through Cable Gland



Pre-Installation



Post-Installation

